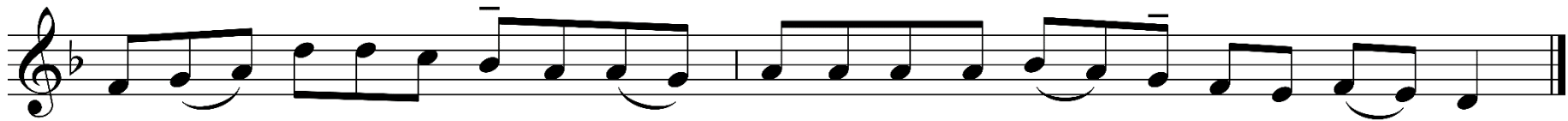


ADVENTNÁ OMŠA II

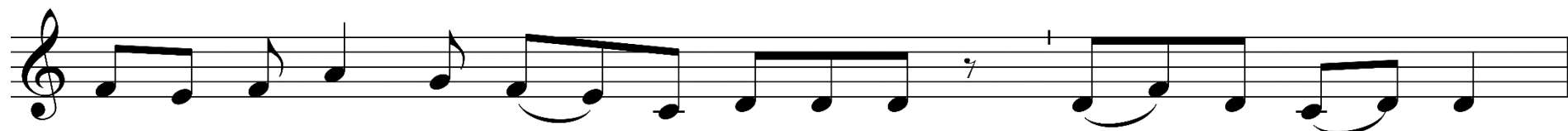
Vstupný spev

Graduale Simplex s. 59 (Iz 45, 8; Ž 19, 2.3.4.5.6.7); adaptácia gregoriánskeho chorálu





Zdra - vas', Má - ri - a, mi - los - ti pl - ná, Pán__ s te - bou,



po - žeh - na - ná si me - dzi že - na - mi, a - le - lu - ja.



Po - žeh - naj, Pa - ne, svo - ju zem.

The image shows a single line of musical notation on a five-line staff. The key signature is one sharp (F#), and the time signature is not explicitly shown but implied to be common time. The melody consists of the following notes: G4 (quarter), A4 (quarter), B4 (quarter), C5 (quarter), B4 (quarter), A4 (quarter), G4 (quarter), F#4 (quarter), and a final quarter rest. The lyrics are written below the staff, with hyphens indicating syllables across notes.