

# NANEBOVSTÚPENIE PÁNA

## Omša v deň slávnosti

Vstupný spev

Rímsky misál s. 424; Graduale Romanum s. 235 (Sk 1, 11; Ž 47, 2)



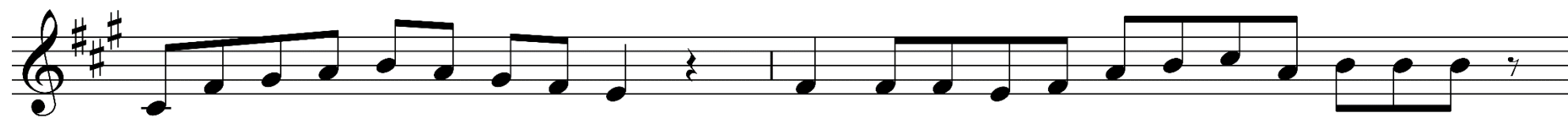
Mu-žo-via ga - li - lej - skí, čo sto - jí - te a u - di - ve - ne hľ'a - dí - te do ne - ba?



On prí - de tak, a - ko ste ho vi - de - li od - chá - dzať, a - le - lu - ja.


Spev na ofertórium

Graduale Romanum s. 237; Graduale Simplex s. 182 (Ž 47, 6; 2.3.7.9)



Za ja - so - tu vy - stu - pu - je Boh, Pán vy - stu - pu - je za hla - ho - lu pol' - ni - ce,

The first line of musical notation is written on a single staff in treble clef with a key signature of three sharps (F#, C#, G#). It begins with a quarter note on G4, followed by quarter notes on A4, B4, C5, B4, A4, G4, and a quarter rest. This is followed by a quarter note on G4, quarter notes on A4, B4, C5, B4, A4, G4, quarter notes on F#4, E4, D4, and quarter notes on C4, B3, A3. The line ends with a fermata over a quarter note on G3.



a - le - lu - ja.

The second line of musical notation is written on a single staff in treble clef with a key signature of three sharps (F#, C#, G#). It begins with a quarter note on G4, followed by quarter notes on A4, B4, C5, B4, A4, G4, and a quarter note on F#4. The line ends with a double bar line.




Hľa, ja som s va - mi po všet - ky dni až do skon - če - nia sve - ta,



a - le - lu - ja.



Pán po - ve - dal môj - mu Pá - no - vi: Sed' po mo - jej pra - vi - ci,



a - le - lu - ja.

Da-ná mi je všet-ka moc na ne-bi i na ze-mi, a-le-lu-ja.

Chod'-te, uč-te všet-ky ná-ro-dy a krs-ti-te ich v me-ne Ot-ca i Sy-na

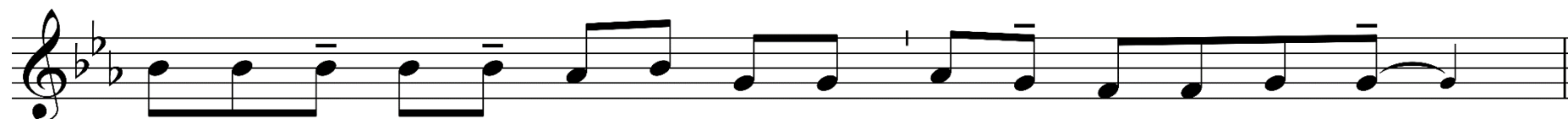
i Du-cha Svä-té-ho, a-le-lu-ja, a-le-lu-ja.



Tých, čo u - ve - ria, bu - dú spre - vá - dzať tie - to zna - me - nia:




V mŕom me - ne bu - dú vy - há - ňať zlých du - chov,



na cho - rých bu - dú vkla - dať ru - ky a tí o - zdra - ve - jú.



Spie-vaj- te Pá - no - vi, čo sa ne - sie na od - ve - kých ne - be - siach k vý - cho - du,



a - le - lu - ja.