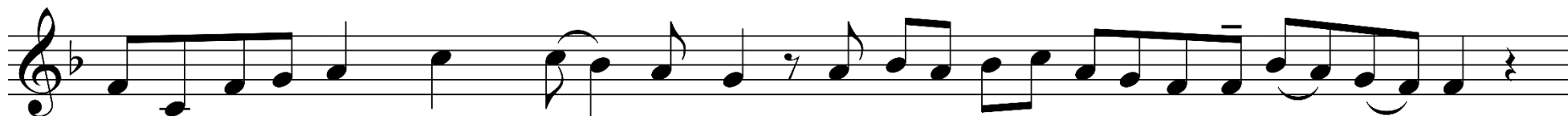


# NARODENIE PÁNA – omša v noci

Vstupný spev I

Rímsky misál s. 138



Ra-duj-me sa všet - ci v Pá - no - vi, ved' sa na sve-te na-ro-dil náš Spa - si - tel'.



Dnes k nám z ne-ba zo - stú-pil pra-vý po - koj.

Vstupný spev II

Rímsky misál s. 138; Graduale Romanum s. 41; Graduale Simplex s. 64 (Ž 2, 7; 1. 2. 8)



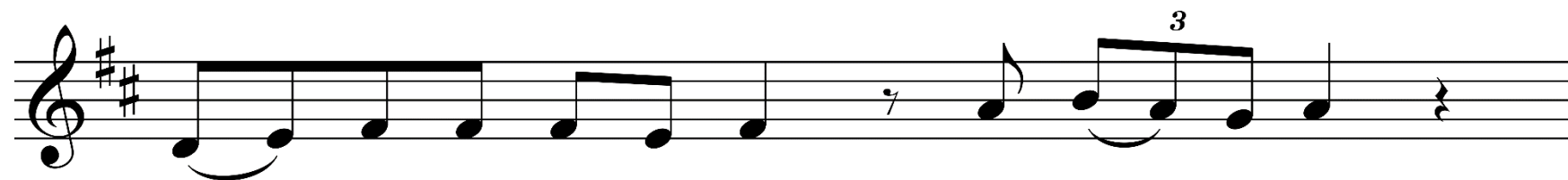
Musical notation for the first line of the chant. It features a treble clef, a key signature of three sharps (F#, C#, G#), and a single measure. The melody consists of six eighth notes: G4, A4, B4, C5, B4, A4, followed by a quarter rest. A slur covers the first three notes.

Pán\_\_ mi po - ve - dal:



Musical notation for the second line of the chant. It features a treble clef, a key signature of three sharps (F#, C#, G#), and two measures. The first measure contains six eighth notes: G4, A4, B4, C5, B4, A4, with a slur under the first three. The second measure contains six eighth notes: G4, A4, B4, C5, B4, A4, with a slur under the first three. The piece ends with a double bar line.

Ty si môj\_\_ Syn, ja som ťa\_\_ dnes splo - dil.



Teš - te sa, ne - be - sia, a ple - saj zem;

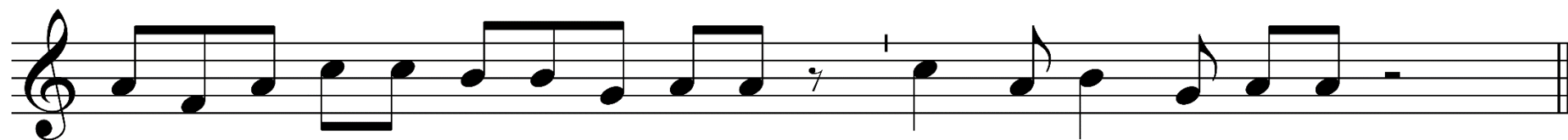


pred tvá - rou Pá - na, že pri - chá - dza.





Splo - dil som Ťa a - ko ro - su pred vý - cho - dom zor - ni - ce.



U - zre - li všet-ky kon-či - ny ze - me spá - su náš - ho Bo-ha.