

PRVÁ ADVENTNÁ NEDELA

Vstupný spev

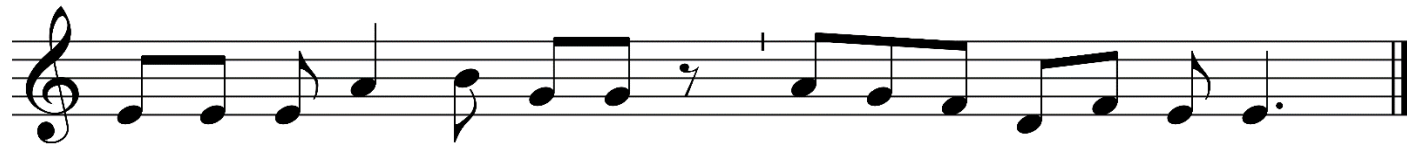
Text: Rímsky misál s. 99; Graduale Romanum s. 15 (Porov. Ž 25, 1-3, 4)



K te-be, Pa - ne, dví-ham svo - ju du - šu, te - be dô - ve - ru - jem, Bo - že môj.



Nech nie som za-han-be - ný a nech mo - ji ne-pria-te - lia ne-zví - ťa - zia na - do mnou,

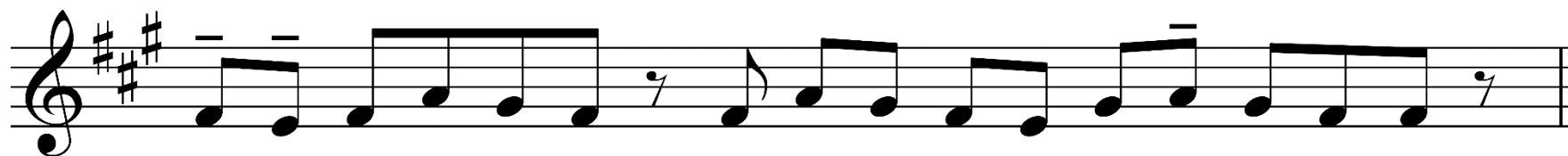


veď nik, čo dú - fa v te-ba, ne - bu - de za-han-be - ný.



Kto dú-fa v te-ba, Pa - ne, ne - bu - de za - han - be - ný.

The image shows a single line of musical notation on a five-line staff. The notation is in a treble clef with a key signature of one flat (B-flat). The melody consists of two phrases. The first phrase starts with a quarter rest, followed by a quarter note G4, a quarter note A4, a quarter note B4, a quarter note C5, a quarter note B4, a quarter note A4, a quarter note G4, and a quarter rest. The second phrase starts with a quarter note G4, a quarter note A4, a quarter note B4, a quarter note C5, a quarter note B4, a quarter note A4, a quarter note G4, and ends with a double bar line. The lyrics are written below the staff, aligned with the notes.



Pán dá po-žeh-na-nie a svo-je plo-dy vy-dá na-ša zem.