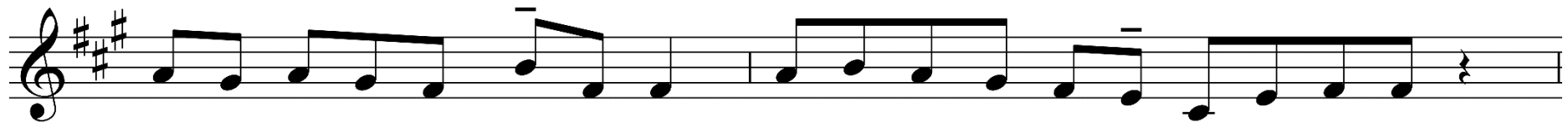


ŠTVRTÁ ADVENTNÁ NEDEĽA

Vstupný spev

Rímsky misál s. 122; Graduale Romanum s. 34 (Porov. Iz 45, 8; Ž 19, 2)



Ros - te, ne - be - sia, z vý - sos - ti, z o - bla - kov nech pr - ší spra - vo - dli - vosť.



Nech sa o - tvo - rí zem a zro - dí Spa - si - te - ľa!



Zdra - vas', Má - ri - a, mi - los - ti pl - ná,



Pán s te - bou, po - žeh - na - ná si me - dzi že - na - mi



a po - žeh - na - ný je plod ži - vo - ta tvoj - ho, Je - žiš.



Hi'a, Pan - na poč - ne a po - ro - dí Sy - na

The first line of musical notation is written on a single staff with a treble clef and a key signature of one sharp (F#). The melody consists of several notes with stems, including a half note, a quarter note, and a half note with a slur. The lyrics are placed below the notes.



a dá mu me - no E - ma - nu - el.

The second line of musical notation continues on a single staff with a treble clef and a key signature of one sharp (F#). It features a half note, a quarter note, and a half note with a slur. The lyrics are placed below the notes.