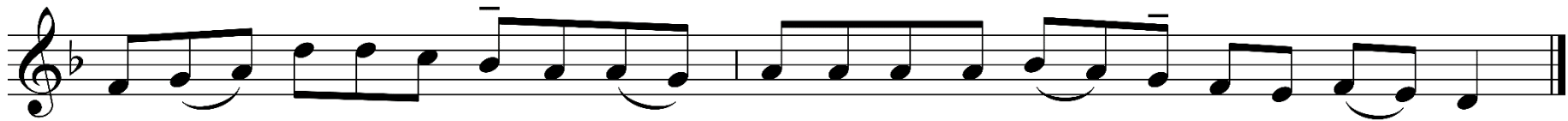


ADVENTNÁ OMŠA II

Vstupný spev

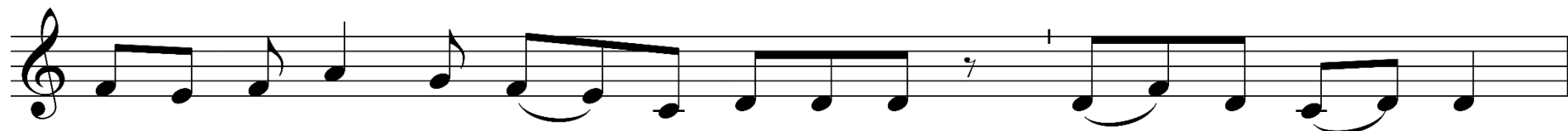
Graduale Simplex s. 59 (Iz 45, 8; Ž 19, 2.3.4.5.6.7); adaptácia gregoriánskeho chorálu



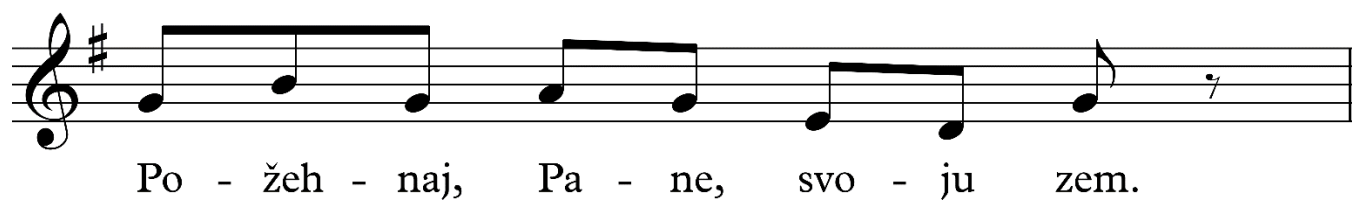
Ros - te, ___ ne - be - sia z vý - sos - ti, ___ z o - bla - kov nech pr - ší spra - vod - li - vosť.



Zdra - vas', Má - ri - a, mi - los - ti pl - ná, Pán__ s te - bou,



po - žeh - na - ná si me - dzi že - na - mi, a - le - lu - ja.



Po - žeh - naj, Pa - ne, svo - ju zem.

The image shows a single line of musical notation on a five-line staff. The key signature is one sharp (F#), and the time signature is not explicitly shown but implied to be common time. The melody consists of a sequence of eighth notes: G4, A4, B4, C5, B4, A4, G4, F#4, followed by a quarter rest. The lyrics are written below the staff, with hyphens indicating syllables across notes: "Po - žeh - naj, Pa - ne, svo - ju zem." The piece concludes with a double bar line.