

Alma Redemptoris Mater



Al - ma Re-demp-tó-ris Ma-ter, quæ pér-vi-a cæ li Por-ta ma-nes, et stel-la ma-ris,



suc-cúr-re ca-dén-ti, Súr-ge-re qui cu-rat, pó-pu-lo: Tu quæ ge-nu-ís-ti, Na-tú-ra mi-rán-te,

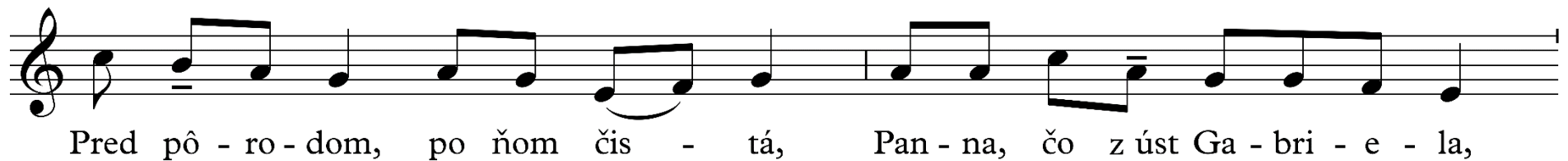
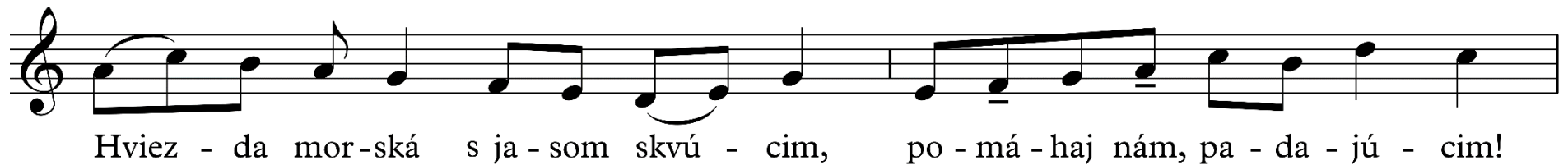


tu - um sanc-tum Ge - ni - tó - rem, — Vir - go pri - us ac pos - té - ri - us,

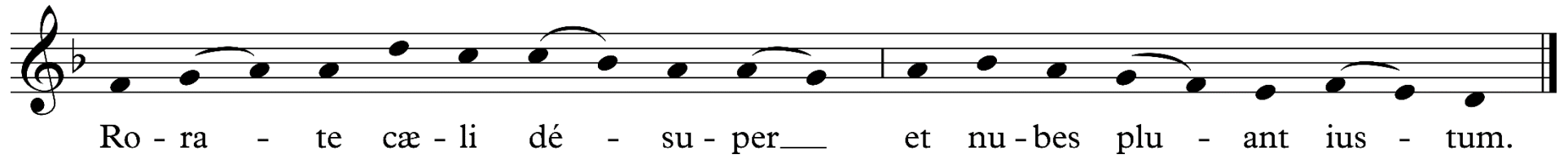


Ga-bri - é - lis ab o - re Sum-mens il-lud A - ve, pec-ca - tó - rum_ mi - se - ré - re.

Slávna Matka Spasiteľa



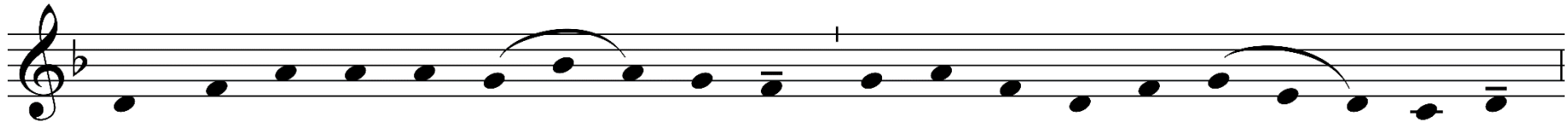
Rorate cæli



Ro - ra - te cæ - li dé - su - per___ et nu - bes plu - ant ius - tum.

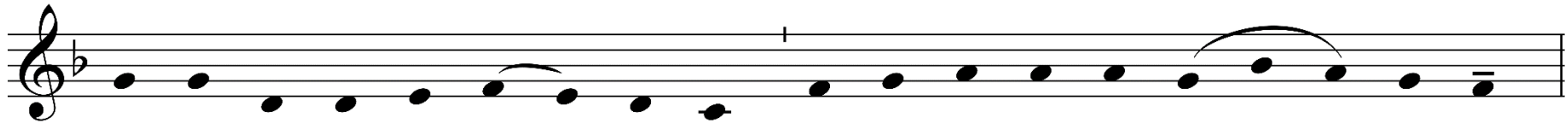
Veni, veni Emmánuel – Prídi, prídi, Emanuel

1. Ve - ni, ve - ni, Em - má - nu - el, cap - tí - vum sol - ve Is - ra - el,



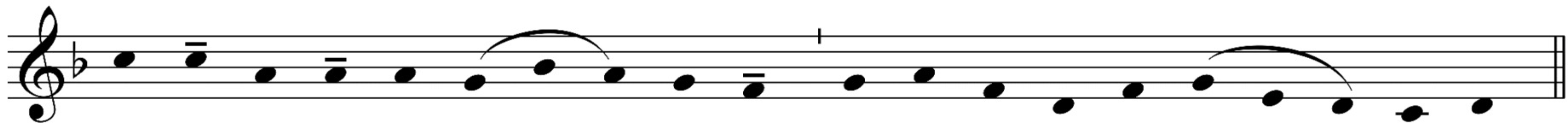
Prí - di, prí - di, E - má - nu - el, vy - slo - bod' z bi - tý I - zra - el,

qui ge - mit in ex - sí - li - o pri - vá - tus De - i Fí - li - o.



kto - rý tú - žob - ne s ná - de - jōu ča - ká na Sy - na Bo - žie - ho.

Gau - de, gau - de, Em - má - nu - el na - scé - tur pro te, Is - ra - el.



Teš sa, ra - duj, E - ma - nu - el na - ro - dí sa pre I - zra - el.

2. Ve - ni, ve - ni Rex gén - ti - um, ve - ni, Re - démp - tor om - ni - um:

Musical notation for the first line of the Latin text. It features a treble clef and a key signature of one flat (B-flat). The melody consists of quarter notes, with two phrases of four notes each, each phrase being under a slur. The first phrase is G4-A4-B4-A4, and the second is G4-A4-B4-A4. The notes are placed on the staff lines: G on the first line, A on the first space, B on the second line, and A on the first space.

Prí - di, prí - di, Král' zá - stu - pov, Vy - ku - pi - tel' si ná - ro - dov,

ut sal - vas tu - os fa - mu - los pec - cá - ti si - bi con - sci - os.

Musical notation for the second line of the Latin text. It features a treble clef and a key signature of one flat (B-flat). The melody consists of quarter notes, with two phrases of four notes each, each phrase being under a slur. The first phrase is G4-A4-B4-A4, and the second is G4-A4-B4-A4. The notes are placed on the staff lines: G on the first line, A on the first space, B on the second line, and A on the first space.

de - ťom zblú - de - ným spá - su daj, ve - do - mí sú si svo - jich vín.

Gau - de, gau - de, Em - má - nu - el nas - cé - tur pro te, Is - ra - el.

Musical notation for the third line of the Latin text. It features a treble clef and a key signature of one flat (B-flat). The melody consists of quarter notes, with two phrases of four notes each, each phrase being under a slur. The first phrase is G4-A4-B4-A4, and the second is G4-A4-B4-A4. The notes are placed on the staff lines: G on the first line, A on the first space, B on the second line, and A on the first space.

Teš sa, ra - duj, E - ma - nu - el na - ro - dí sa pre I - zra - el.

3. Ve - ni, ve - ni, o, O - ri - ens, so - la - re nos ad vé - ni - ens:



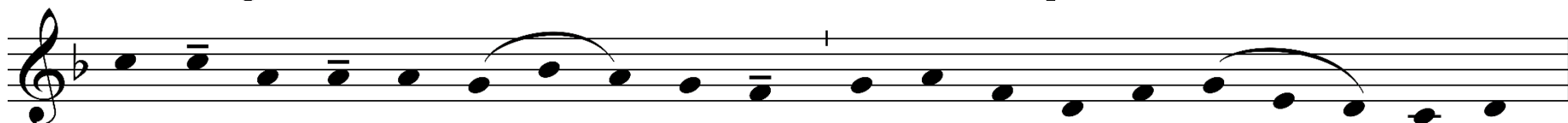
Prí - di, prí - di, ty ran - ný Lúč, sln - kom a tep - lom pre - žiar nás:

noc - tis de - pél - le né - bu - las, di - rás - que noc - tis té - ne - bras.



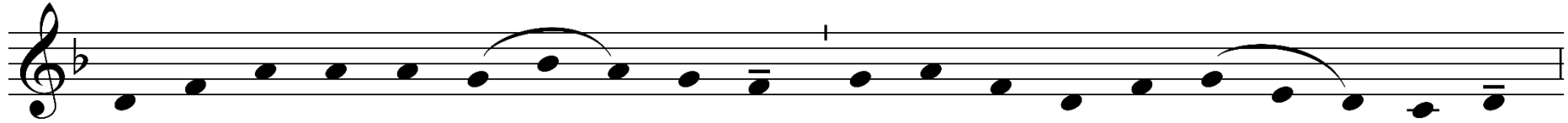
tem - no - tu no - ci pre - me - níš, pre - žia - riš svet - lom kaž - dý chrám.

Gau - de, gau - de, Em - má - nu - el nas - cé - tur pro te, Is - ra - el.



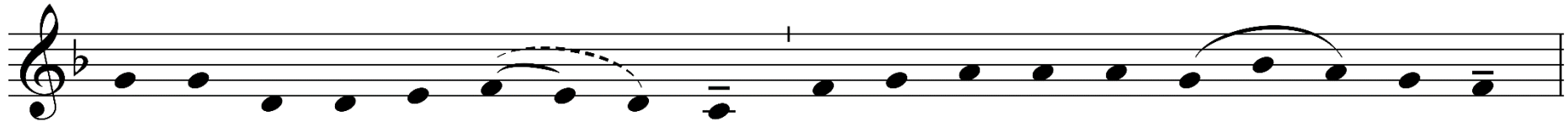
Teš sa, ra - duj, E - ma - nu - el na - ro - dí sa pre I - zra - el.

4. Ve - ni, Cla - vis Dá - vi - di - ca, reg - na re - clu - de cæ - li - ca;



Prí - di, prí - di, Kl'úč Dá - vi - dov, o - tvor ne - bes - ké krá - ľov - stvo,

fac i - ter tu - tum su - pér - num, et clau - de vi - as ín - fe - rum.



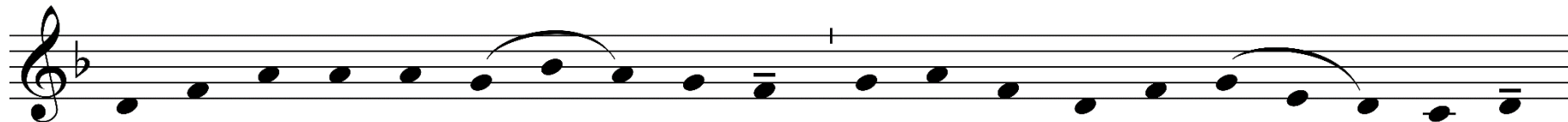
u - káž ces - tu nám všet - kým, ne - daj pad - núť viac do _____ hl - bín.

Gau - de, gau - de, Em - má - nu - el nas - cé - tur pro te, Is - ra - el.



Teš sa, ra - duj, E - ma - nu - el na - ro - dí sa pre I - zra - el.

5. Ve - ni, o, Je - se Vír - gu - la: ex hos - tis tu - os ún - gu - la,



Prí - di, prí - di Je - se - ho prút, vy - slo - bod' z ne - pria - te - l'a pút

de spe - cu tu - os tár - ta - ri e - duc, et an - tro bá - rath - ri.



tých, čo i - dú do prie - pas - ti, kde zú - ri smú - tok, bo - les - ti.

Gau - de, gau - de, Em - má - nu - el nas - cé - tur pro te, Is - ra - el.



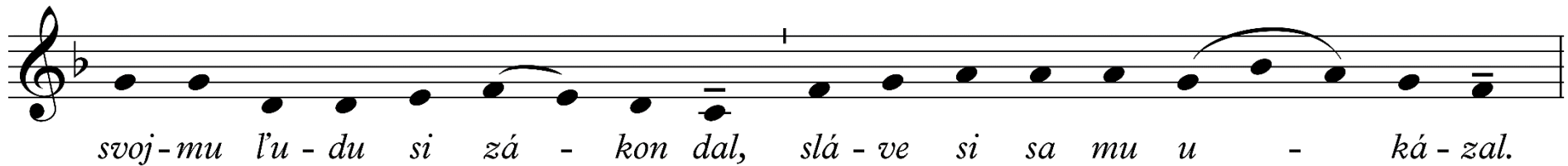
Teš sa, ra - duj, E - ma - nu - el na - ro - dí sa pre I - zra - el.

6. Ve - ni, ve - ni, A - dó - na - i, qui pó - pu - lo in Sí - na - i,



Prí - di, prí - di, ó, A - do - nai, kto - rý na vr - chu Si - naj

le - gem de - dís - ti vér - ti - ce, in ma - jes - tá - te gló - ri - æ.



svoj - mu ľu - du si zá - kon dal, slá - ve si sa mu u - ká - zal.

Gau - de, gau - de, Em - má - nu - el nas - cé - tur pro te, Is - ra - el.



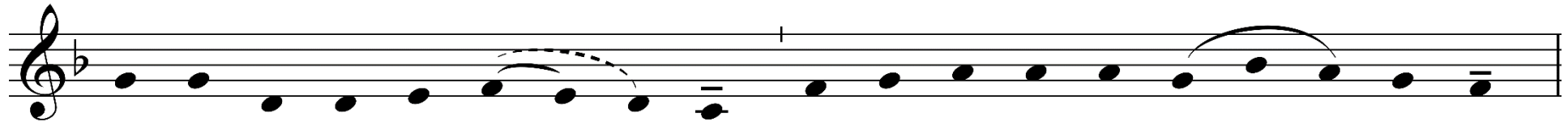
Teš sa, ra - duj, E - ma - nu - el na - ro - dí sa pre I - zra - el.

7. Ve - ni, o Sa - pi - én - ti - a, quæ hic dis - po - nis om - ni - a:



Prí - di, prí - di, ó, Múd - roš', kto - rá spre - vá - dza ži - vot náš,

ve - ni, ví - am pru - dén - ti - æ ut do - ce - as et gló - ri - æ.



príd' a na - uč nás krá - čať, bez - peč - nú ces - tu u - káž nám.

Gau - de, gau - de, Em - má - nu - el nas - cé - tur pro te, Is - ra - el.



Teš sa, ra - duj, E - ma - nu - el na - ro - dí sa pre I - zra - el.