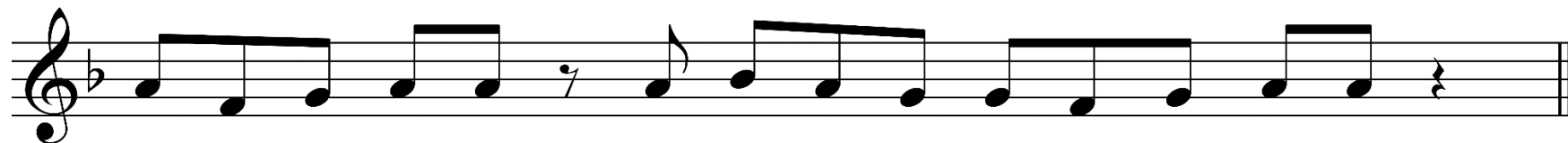


CEZROČNÁ OMŠA III

Vstupný spev

Graduale Simplex s. 225 (Porov. Ž 25, 16; 1-2a.4.5.6.7b.8.9.10.15.16)



Po - zri - že na mňa a zmi - luj sa na - do mnou, Pa - ne.

Boh_ mi po-má-ha a Pán u - dr - žia - va mo - ju du - šu.

The image shows a single line of musical notation on a five-line staff. The notation begins with a treble clef. The melody consists of several groups of notes: a group of four notes (G4, A4, B4, C5) with a slur above them; a group of three notes (D5, C5, B4) with a slur above them; a single note (A4); a group of three notes (G4, F4, E4) with a slur above them; a group of four notes (D4, C4, B3, A3) with a slur above them; a group of three notes (G3, F3, E3) with a slur above them; and a final group of two notes (D3, C3) with a slur above them. The notes are connected by stems, and there are horizontal lines above some groups of notes, possibly indicating a specific rhythmic value or a breath mark. The lyrics are written below the staff, aligned with the notes.



Hľa - daj - te naj - prv Bo - žie krá - ľov - stvo a je - ho spra - vod - li - vosť



a všet - ko os - tat - né sa vám pri - dá, a - le - lu - ja.