

NARODENIE PÁNA – omša v noci

Vstupný spev I

Rímsky misál s. 138



Ra-duj-me sa všet - ci v Pá - no - vi, ved' sa na sve-te na-ro-dil náš Spa - si - tel'.



Dnes k nám z ne-ba zo - stú-pil pra-vý po - koj.

Vstupný spev II

Rímsky misál s. 138; Graduale Romanum s. 41; Graduale Simplex s. 64 (Ž 2, 7; 1. 2. 8)



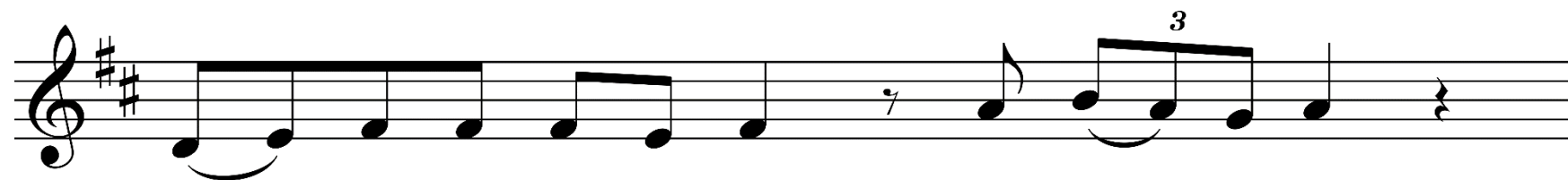
Pán___ mi po - ve - dal:

The first line of musical notation is on a single staff with a treble clef and a key signature of three sharps (F#, C#, G#). It contains six quarter notes: G4, A4, B4, C5, B4, A4, followed by a quarter rest. A slur is placed under the first three notes (G, A, B).



Ty si môj___ Syn, ja som ťa___ dnes splo - dil.

The second line of musical notation is on a single staff with a treble clef and a key signature of three sharps (F#, C#, G#). It contains a sequence of notes: G4, A4, B4, C5, B4, A4, G4, F#4, E4, D4, C4. There are two slurs: one under the first three notes (G, A, B) and another under the last three notes (E, D, C). The line ends with a double bar line.



Teš - te sa, ne - be - sia, a ple - saj zem;



pred tvá - rou Pá - na, že pri - chá - dza.

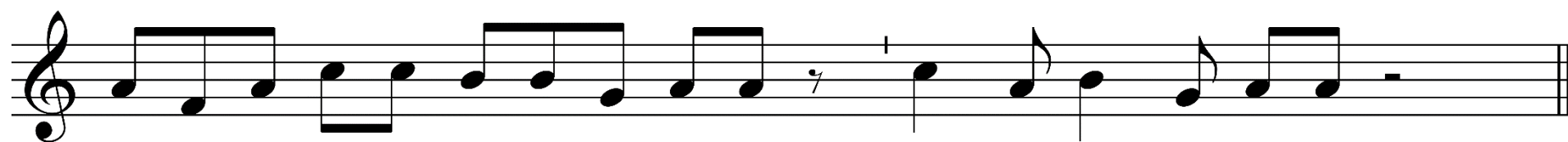


The image shows a single line of musical notation on a five-line staff. The notation is in a treble clef with a key signature of one flat (B-flat). The melody consists of several measures of music, including quarter notes, eighth notes, and a final quarter note with a fermata. The lyrics are written below the staff, aligned with the notes.

Slo-vo sa te-lom sta-lo a my sme u - vi - de - li je - ho slá - vu.

The image shows a musical score for a vocal piece. It features a single staff with a treble clef and a key signature of two sharps (F# and C#). The melody consists of several eighth and quarter notes, with some beamed notes. The lyrics are written below the staff: "Splo - dil som ťa a - ko ro - su pred vý - cho-dom zor - ni - ce." The text is in a simple, sans-serif font, with hyphens indicating syllables across words. The score ends with a double bar line.

Splo - dil som ťa a - ko ro - su pred vý - cho-dom zor - ni - ce.



U - zre - li všet-ky kon-či - ny ze - me spá - su náš - ho Bo-ha.