

27. decembra

SV. JÁNA, APOŠTOLA A EVANJELISTU

Vstupný spev I

Rímsky misál s. 1129



To - to je Ján, kto - rý pri ve - če - ri sklo - nil hla - vu na Pá - no - vu hrud';
svä - tý a - poš - tol, kto - ré - mu Pán zja - vil ne - bes - ké ta - jom - stvá
a on o - hla - so - val po - ce - lom sve - te slo - vá ži - vo - ta.

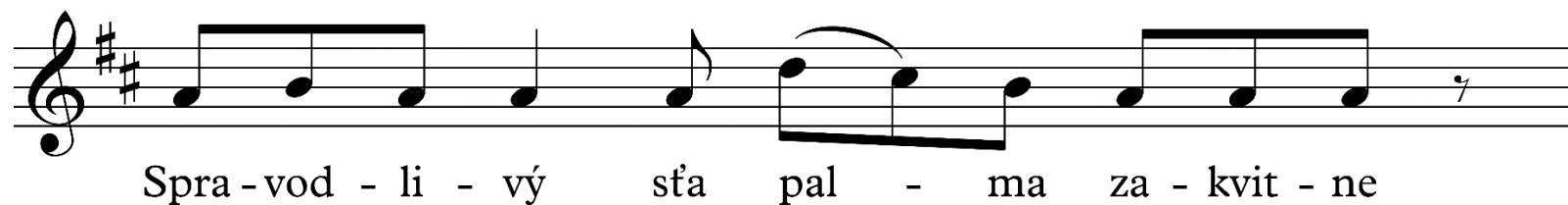
Vstupný spev II

Rímsky misál s. 1129; Graduale Romanum s. 636/493 (Porov. Sir 15, 5; Ž 92, 2)

U - pros - tred zhro - maž - de - nia mu Pán o - tvo - ril ús - ta;

na - pl - nil ho du - chom múd - ros - ti a ro - zu - mu

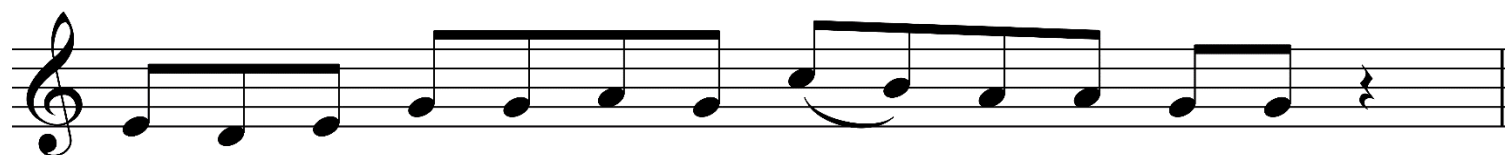
a za - o - del ho rú - chom slá - vy.





Slo - vo sa te - lom sta - lo a pre - bý - va - lo me - dzi na - mi.

The first line of musical notation is written on a single staff with a treble clef. It consists of two measures. The first measure contains six eighth notes: G4, A4, B4, C5, B4, A4. The second measure contains six eighth notes: G4, A4, B4, C5, B4, A4, followed by a quarter rest. A fermata is placed over the final note of the second measure.




A z je - ho pl - no - sti sme pri - ja - li všet - ci.

The second line of musical notation is written on a single staff with a treble clef. It consists of two measures. The first measure contains six eighth notes: G4, A4, B4, C5, B4, A4. The second measure contains six eighth notes: G4, A4, B4, C5, B4, A4, followed by a quarter rest. A fermata is placed over the final note of the second measure.



Me - dzi brat - mi sa roz - chý - ri - lo, že ten u - če - ník ne - u - mrie.



No Je - žíš mu ne - po - ve - dal: Ne - u - mrie, a - le: Chcem, a - by zo - stal, kým ne - prí - dem.