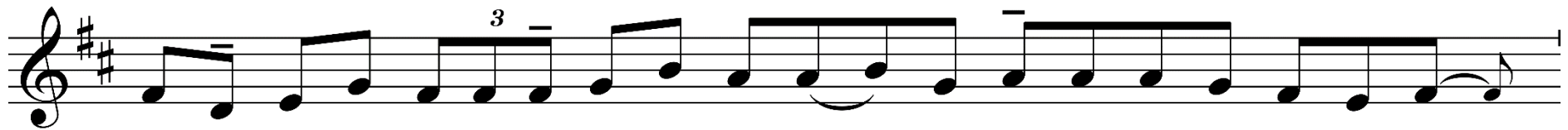


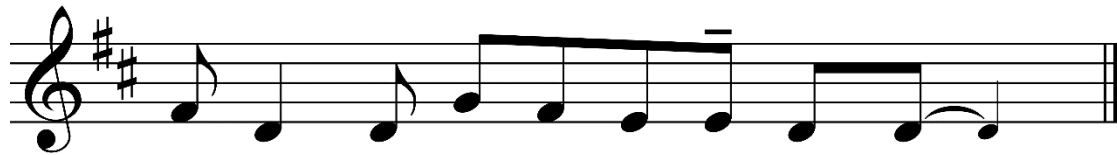
Nedeľa v Oktáve Narodenia Pána, alebo ak jej niet, 30. decembra
SVÄTEJ RODINY JEŽIŠA, MÁRIE A JOZEFA

Vstupný spev I

Rímsky misál s. 143 (Lk 2, 16)



Pa-stie - ri sa po-po-ná-hľa - li a na - šli Má - ri - u a Jo - ze - fa



i Die - ťa u - lo - že - né v jas - liach.



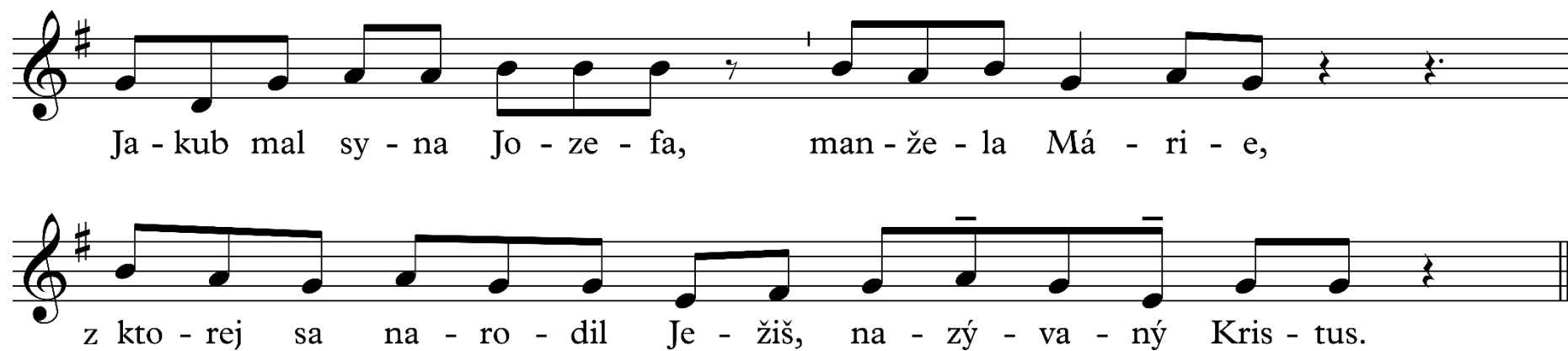
Boh je vo svo-jom svä - tom__ prí - byt - ku.



On je Boh, čo o - pus - te - ným dá - va pre - bý - vať v do - moch.



On__ dá - va si - lu a sta - toč - nosť svoj - mu__ ľu - du.



Ja - kub mal sy - na Jo - ze - fa, man - že - la Má - ri - e,
z kto - rej sa na - ro - dil Je - žiš, na - zý - va - ný Kris - tus.



Spo - lie - ham sa na te - ba, Pa - ne a ho - vo - rím: Ty si môj Boh,




v tvo - jich ru - kách je môj o - sud.

Spev na ofertórium II

Graduale Simplex s. 73 (Porov. Lk 2, 33; Ž 40, 2.7b.8.9a.9b)

Je - ži - šo - vi ro - di - čia sa di - vi - li nad tým, čo sa o ňom ho - vo - ri - lo.



Náš Boh sa zja - vil na ze - mi a pre - bý - val me - dzi ľuď - mi.

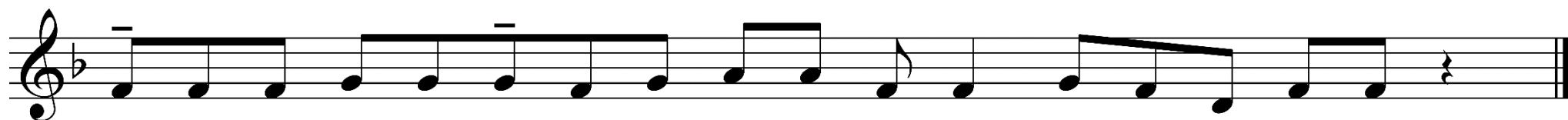
The image shows a single line of musical notation on a five-line staff. The notation begins with a treble clef and a common time signature. The melody consists of a series of eighth and quarter notes, with some notes beamed together. There are two bar lines: one after the first measure and another after the eighth measure. The lyrics are written below the staff, with hyphens indicating syllables that span across multiple notes. The text is in a simple, sans-serif font.



Syn môj, čo si nám to u - ro - bil? Tvoj o - tec i ja sme Ťa s bo - les - Ťou hľá - da - li.



A pre - čo ste ma hľá - da - li? Ne - ve - de - li ste, že mám byť tam, kde i - de o môj - ho Ot - ca?



Má - ri - a za - cho - vá - va - la všet - ky slo - vá vo svo - jom srd - ci.



Musical notation for the first line of the chant. It features a treble clef, a key signature of one flat (B-flat), and a 4/4 time signature. The melody consists of eighth and quarter notes. There are two triplet markings (indicated by a '3' above the notes) over the words 'se-bou die-ťa' and 'je-ho mat-ku'. The line ends with a double bar line.

Vez-mi so se-bou die - ťa a je - ho mat-ku a choď do i-zra-el skej kra - ji - ny.



Musical notation for the second line of the chant. It continues from the first line with a treble clef, a key signature of one flat, and a 4/4 time signature. The melody consists of eighth and quarter notes. There is a triplet marking (indicated by a '3' above the notes) over the word 'stieh-li'. The line ends with a double bar line.

Tí, čo stieh-li na ži-vot die - ťa - ťu, už po - mre - li.