

DVANÁSTA NEDEĽA


Vstupný spev

Rímsky misál s. 472; Graduale Romanum s. 294 (Ž 28, 8-9 a 1)



Pán je si - la svoj-ho ľu - du a ú - to - čiš - te spá - sy pre svoj-ho Po-ma-za-né - ho.

The first line of musical notation is written on a single staff with a treble clef. It begins with a whole rest, followed by a series of eighth notes: G4, A4, B4, C5, B4, A4, G4. This is followed by a quarter rest, then a half note G4, a quarter note A4, a quarter note B4, a quarter note C5, a quarter note B4, and a quarter note A4. The phrase concludes with a triplet of eighth notes: G4, A4, B4, followed by a quarter note C5, a quarter note B4, and a quarter note A4.



Spas svoj ľud a po - žeh-naj svo - jich_ de-di - čov a spra - vuj_ ich a dví-haj ich až na-ve-ky.

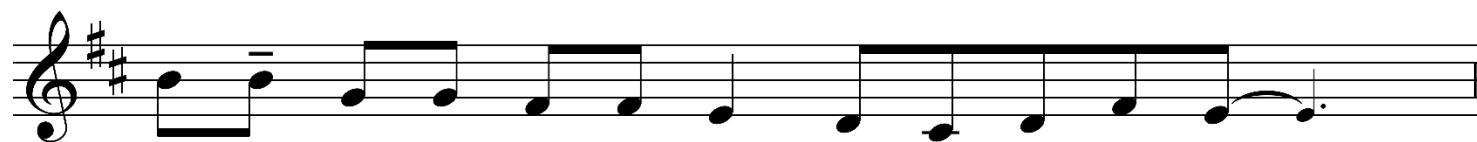
The second line of musical notation is written on a single staff with a treble clef. It begins with a half note G4, a quarter note A4, a quarter note B4, a quarter note C5, a quarter note B4, a quarter note A4, a quarter note G4, a quarter note F4, a quarter note E4, and a quarter note D4. This is followed by a half note G4, a quarter note A4, a quarter note B4, a quarter note C5, a quarter note B4, and a quarter note A4. The phrase concludes with a half note G4, a quarter note A4, a quarter note B4, a quarter note C5, a quarter note B4, and a quarter note A4.



Pev-ne drž mo-je kro-ky na svo-jich chod-ní-koch, a-by mo-je no-hy ne-za-ko-lí - sa - li.



Na-kloň ku mne sluch a vy - po-čuj mo-je slo - vá.



U - káž svo - je pre - div - né mi - lo - sr - den - stvo,



ty, čo za - chra - ňu - ješ dô - ve - ru - jú - cich v te - ba.



O - či všet - kých sa s dô - ve - rou u - pie - ra - jú na___ te - ba, Pa - ne,



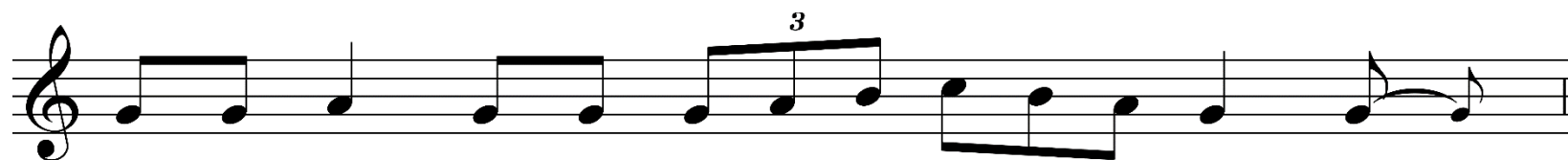
a ty im dá - vaš po - krm v pra - vý čas.



Ja som dob - rý pas - tier; aj svoj ži - vot po - lo - žím za ov - ce,



ho - vo - rí_____ Pán.



V je - ho stán - ku mu pri - ne - siem o - be - tu chvá - ly,



bu - dem spie - vať a hrať Pá - no - vi.



Čo vám ho - vo - rím vo tme, ho - vor - te na svet - le

The first line of musical notation is written on a single staff in G-clef and B-flat key signature. It begins with a treble clef and a B-flat. The melody consists of quarter notes and eighth notes. A triplet of eighth notes is marked with a '3' above it. The line ends with a fermata over the final note.

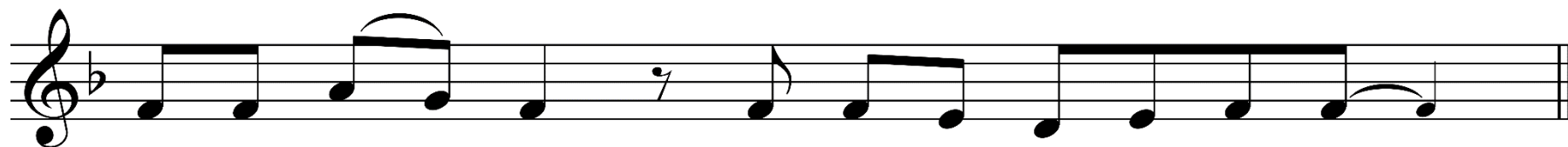


a čo po - ču - je - te do u - cha, roz - hla - suj - te zo striech.

The second line of musical notation continues on a single staff. It begins with a treble clef and a B-flat. The melody continues with quarter and eighth notes. The line ends with a double bar line.



Kto chce ísť za mnou, nech za - prie sám se - ba,



vez - me svoj___ kríž a nech ma na - sle - du - je.