



DRUHÁ NEDEĽA

Vstupný spev

Rímsky misál s. 459; Graduale Romanum s. 260 (Ž 66, 4; 1-2)



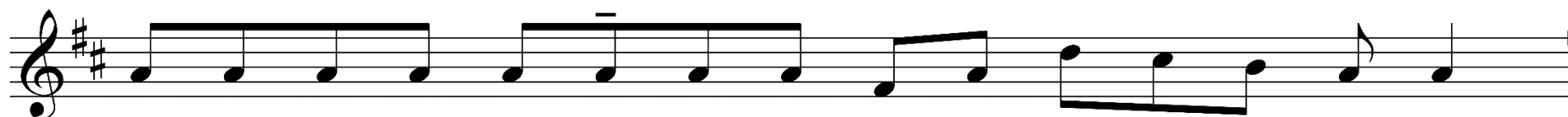
Nech sa ti, Bo - že, kla - nia ce - lá zem a nech ti spie - va;



nech o - spe - vu - je tvo - je me - no, Naj - vyš - ší.



Ja - saj Bo - hu ce - lá zem, hraj - te a spie - vaj - te na slá - vu je - ho me - na.



Pod' - te sem a po - čú - vaj - te všet - ci cti - te - lia Bo - ží,




vy - roz - prá - vam vám, a - ké veľ - ké ve - ci mi u - ro - bil, a - le - lu - ja.



Pre-stie-raš mi stôl a ka-lich mi na - plí - ňaš až po o - kraj.



The image shows a single line of musical notation on a five-line staff. The notation begins with a treble clef. The melody consists of eighth and quarter notes, with some notes beamed together. There are three measures of music, each ending with a fermata. The lyrics are written below the staff, aligned with the notes. The lyrics are: "My sme u - ve - ri - li a spoz-na - li sme lás - ku, a - kú má Boh k nám." The text is in a simple, sans-serif font.



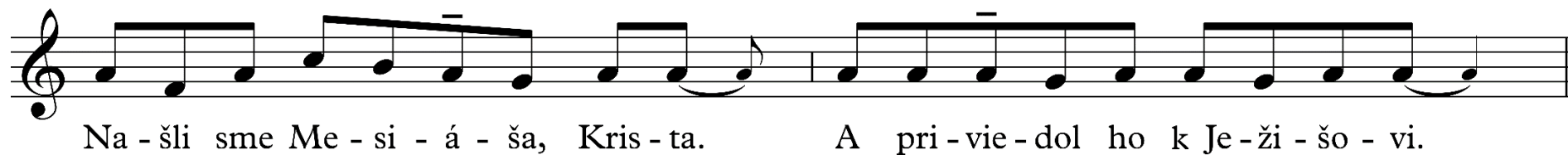
Musical notation for the first line of the chant, featuring a treble clef, a key signature of one flat (B-flat), and a 7/8 time signature. The melody consists of quarter notes and eighth notes, with a final quarter rest. The lyrics are: Bu - de - me sa te - šiť z tvoj - ho ví - ťaz - stva

Bu - de - me sa te - šiť z tvoj - ho ví - ťaz - stva



Musical notation for the second line of the chant, featuring a treble clef, a key signature of one flat (B-flat), and a 7/8 time signature. The melody continues from the first line, ending with a double bar line. The lyrics are: a v me - ne náš - ho Bo - ha dví - hať zá - sta - vy.

a v me - ne náš - ho Bo - ha dví - hať zá - sta - vy.






Pán po - ve - dal: Na - plň - te ná - do - by vo - dou a za - nes - te sta - rej - šie - mu.



Keď sta - rej - ší o - chut - nal vo - du pre - me - ne - nú na ví - no, vra - vel že - ní - cho - vi:



Za - cho - val si dob - ré ví - no až do - te - raz.



To - to zna - me - nie u - ro - bil Je - žiš a - ko pr - vé pred svo - ji - mi u - če - ník - mi.