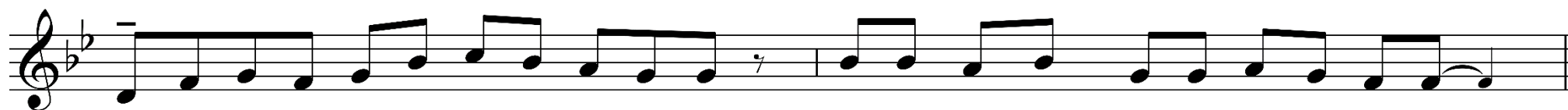


TRIDSIATA DRUHÁ NEDELA

Vstupný spev

Rímsky misál s. 501; Graduale Romanum s. 363 (Porov. Ž 88, 3 a 2)

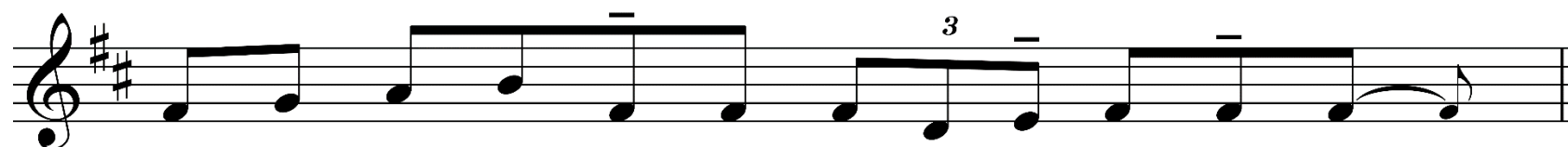


Kiež pre-nik-ne k te-be mo-ja mod-lit-ba,

na-kloň svoj sluch k mo-jej pros-be, Pa-ne.



Riad' mo - je kro - ky pod - ľa tvoj - ho vý - ro - ku;



nech ma ne - o - vlá - da ni - ja - ká ne - prá - vosť.



Pán je môj pas - tier, nič mi ne - chý - ba;



pa - sie ma na ze - le - ných pa - šien - kach.



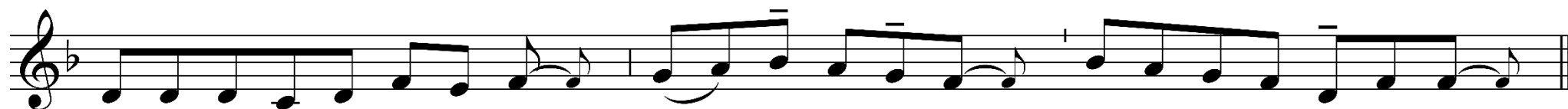
Vo - dí ma k ti - chým vo - dám.

U - če - ní - ci spo - zna - li Pá - na Je - ži - ša pri lá - ma - ní chle - ba.

The image shows a single line of musical notation on a five-line staff. The key signature has one flat (B-flat), and the time signature is not explicitly shown but appears to be common time. The melody consists of quarter and eighth notes. There are horizontal lines above the notes, likely indicating breath marks or phrasing. The lyrics are written below the staff, aligned with the notes.



Múd - re pan - ny si vza - li s lam - pa - mi aj o - lej do ná - dob.



O pol - no - ci sa str - hol krik: Že - ních pri - chá - dza, vyj - di - te mu v ú - stre - ty!