


# PRVÁ PÔSTNA NEDEĽA

## Vstupný spev I

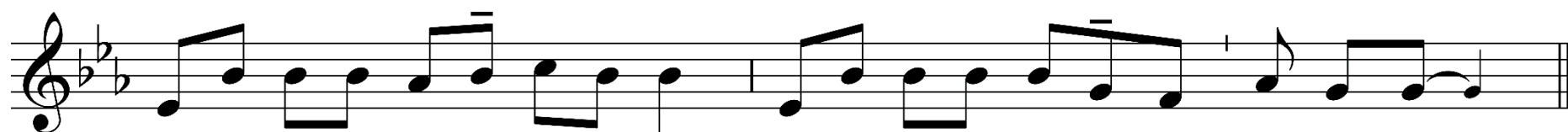
Rímsky misál s. 180; Graduale Romanum s. 71; (Ž 91, 14-15 a 1.2)



Keď ku mne za - vo - lá, ja\_\_\_\_ ho vy - sly - ším, za - chrá - nim ho i o - slá - vim.



Ob - da - rím ho dl - hým ži - vo - tom.

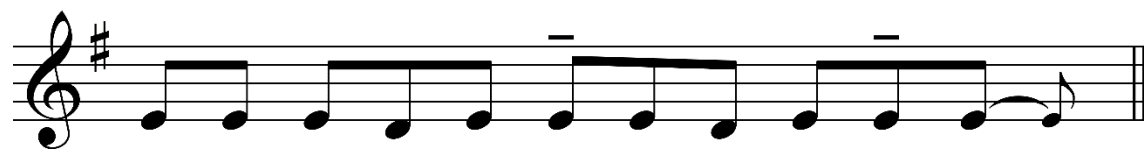


The image shows a single line of musical notation on a five-line staff. The key signature has two flats (B-flat and E-flat), and the time signature is not explicitly shown but appears to be common time. The melody consists of quarter and eighth notes. There are two measures of music, each followed by a bar line. The first measure contains the lyrics 'Bu-deš vo-lať a Pán od-po-vie,' and the second measure contains 'bu-deš kri-čať a riek-ne: Hľa, tu som!'. The notes are: G4, A4, Bb4, C5, Bb4, A4, G4, F4, E4, D4, C4. The second measure notes are: G4, A4, Bb4, C5, Bb4, A4, G4, F4, E4, D4, C4. The piece ends with a double bar line.

Bu-deš vo-lať a Pán od-po-vie, bu-deš kri-čať a riek-ne: Hľa, tu som!



Svo - ji - mi kríd - la - mi ťa za - clo - ní Pán a u - chý - liš sa pod je - ho pe - ru - te.



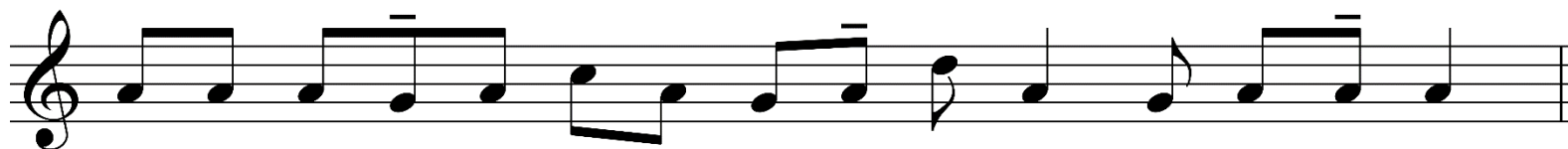
Je - ho prav - da je š tí - tom a pan - cie - rom.



Ak dá-vaš al-muž-nu, nech tvo-ja ľa-vá ru-ka ne-vie, čo ro-bí pra-vá.



Nie-len z chle-ba ži - je člo - vek,



a - le z kaž-dé - ho slo - va, kto - ré vy - chá - dza z Bo-žích úst.

Po - zo - ruj mo - ju hla - si - tú pros - bu, Pa - ne.

The image shows a single line of musical notation on a five-line staff. The key signature consists of three sharps (F#, C#, G#), indicating the key of D major. The melody is written in a treble clef. It begins with a quarter note on G4, followed by quarter notes on A4, B4, C5, B4, A4, G4, and F#4. The eighth note F#4 is beamed with the quarter note G4. This is followed by a quarter note on A4, a quarter note on B4, and a quarter note on C5. The final note is a quarter note on B4, which is beamed with the quarter note A4. The piece concludes with a double bar line.