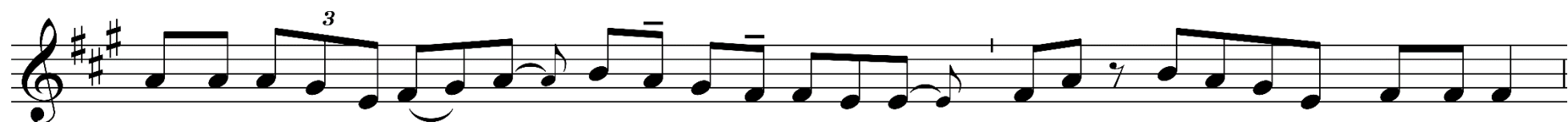


STREDA SVĚTÉHO TÝŽDŇA

Vstupný spev

Rímsky misál s. 265; Graduale Romanum s. 155 (Porov. Flp 2, 10.8.11; Ž 102, 2)




Nech sa na me-no Je - žiš sklo-ní kaž-dé ko-le-no v ne-bi, na ze-mi i v pod-sve-tí,



le - bo Pán sa stal po-sluš-ným až na smrť, až na smrť na krí - ži.



Pre-to je Pán Je - žiš Kris-tus v slá - ve Bo-ha Ot-ca.



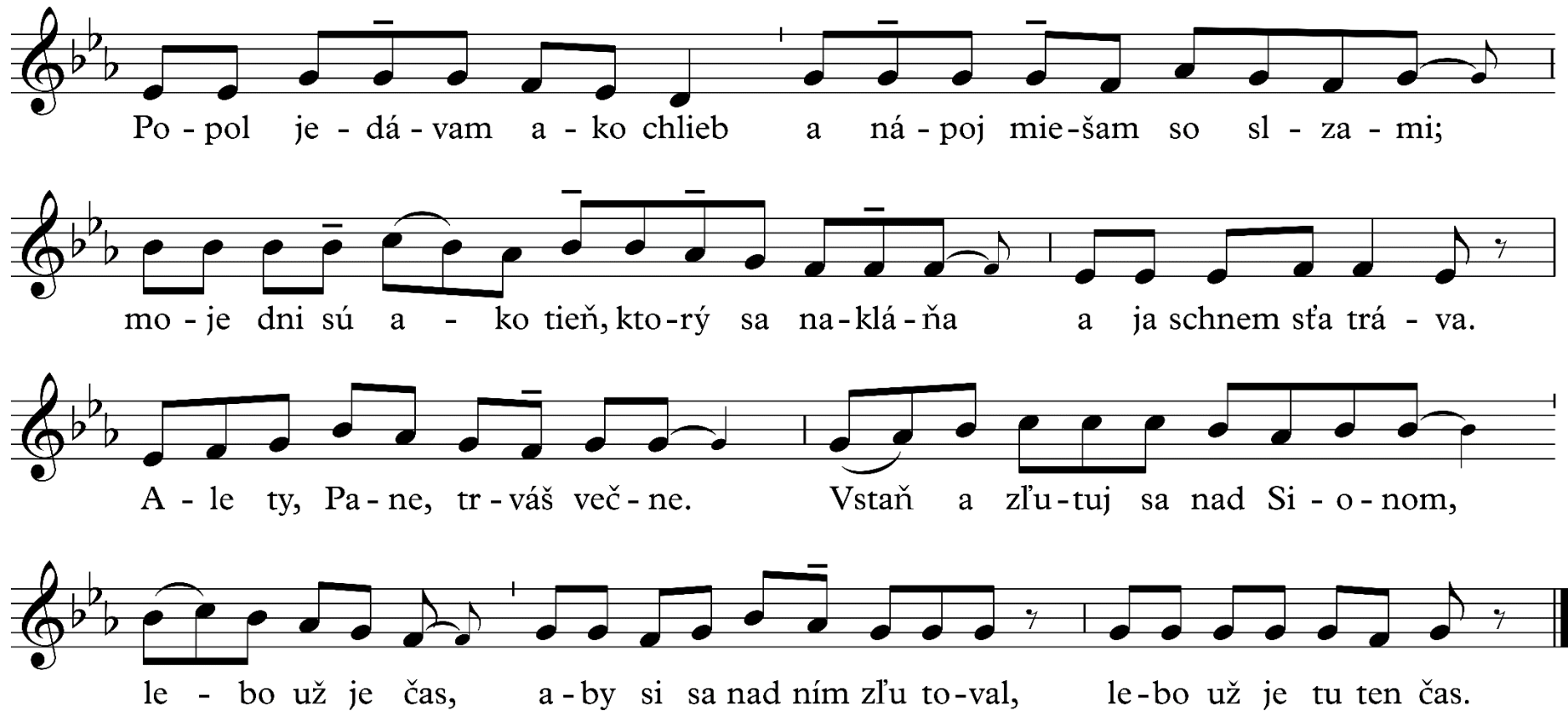
Pa - ne, vy - slyš mo - ju mod - lit - bu a mo - je vo - la - nie nech dôj - de k te - be.

The first line of musical notation is written on a single staff in treble clef with a key signature of two sharps (F# and C#). The melody consists of a sequence of eighth and quarter notes, with a fermata over the final note. The lyrics are written below the staff, with hyphens indicating syllables across notes.



Ne - skrý - vaj svo - ju tvár pre - do mnou.

The second line of musical notation is written on a single staff in treble clef with a key signature of two sharps. The melody consists of a sequence of quarter and eighth notes, ending with a double bar line. The lyrics are written below the staff, with hyphens indicating syllables across notes.



Po - pol je - dá - vam a - ko chlieb a ná - poj mie - šam so sl - za - mi;
mo - je dni sú a - ko tieň, kto - rý sa na - klá - ňa a ja schnem sťa trá - va.
A - le ty, Pa - ne, tr - váš več - ne. Vstaň a zľu - tuj sa nad Si - o - nom,
le - bo už je čas, a - by si sa nad ním zľu to - val, le - bo už je tu ten čas.