

## ŠIESTA VEĽKONOČNÁ NEDEĽA

Vstupný spev

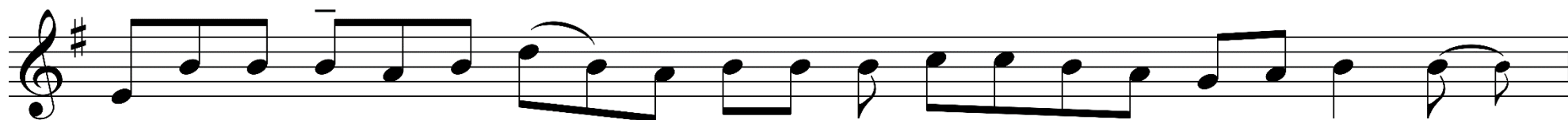
Rímsky misál s. 417; Graduale Romanum s. 229 (Porov. Iz 48, 20; Ž 66, 1)



Nad-še-ne o-hla-suj-te, a-by to bo-lo po-čuť, zve-stuj-te to až po kraj\_ ze - me;



Pán vy-slo-bo-dil svoj ľud, a - le - lu - ja.



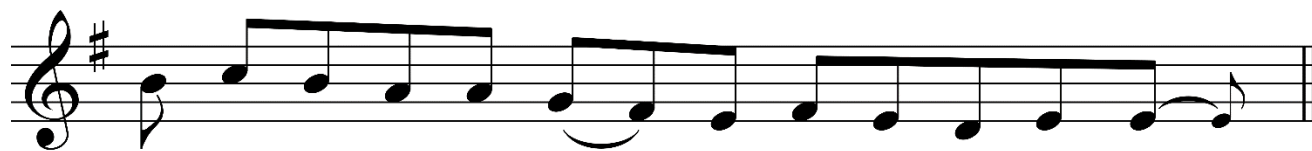
Ve - leb - te, ná - ro - dy, náš - ho Bo - ha a roz - hla - suj - te je - ho chvá - lu.



On dal ži - vot na - šej du - ši a chrá - ni na - še no - hy pred pá - dom.



Nech je zve - le - be - ný Boh, le - bo ne - od - mie - tol mo - ju mod - lit - bu



a ne - od - ňal mi svo - je mi - lo - sr - den - stvo.



Ne - ne - chám vás a - ko si - ro - ty, prí - dem k vám, a - le - lu - ja



a va - še srd - ce sa bu - de ra - do - vať,

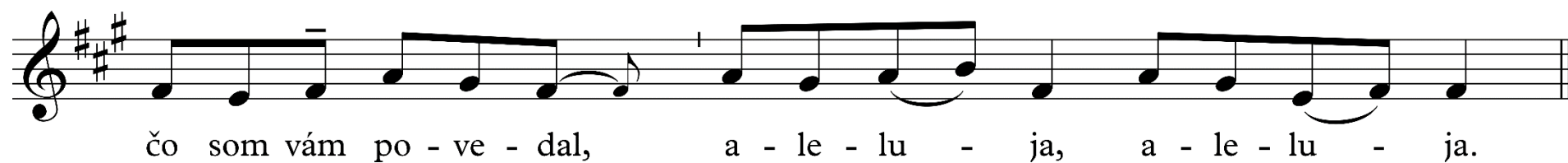
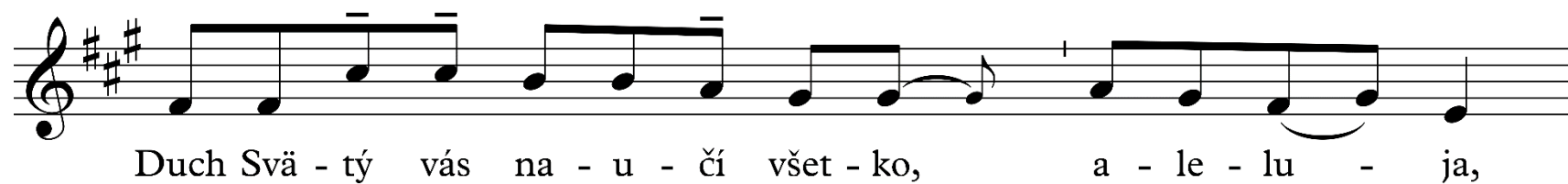


a - le - lu - ja, a - le - lu - ja.

Ja som si vás vy-vo - lil, a - by ste\_\_ šli a pri-ná - ša - li o - vo - cie

a a - by va - še\_\_ o - vo - cie zo - sta - lo, a - le - lu - ja.

The image shows a musical score for a vocal piece. It consists of two staves of music in a single system. The first staff begins with a treble clef and a 7-measure rest, followed by a melodic line. The second staff also begins with a treble clef and a 7-measure rest, continuing the melody. The lyrics are written below the notes, with hyphens indicating syllables across notes. The piece concludes with a double bar line.



Ak ma mi-lu-je-te, bu-de-te za-cho-vá-vať mo-je pri-ká-za-nia, ho-vo-rí Pán.

A ja po-pro-sím Ot-ca a on vám dá i-né-ho Te-ši-te-ľa,

a-by zo-stal s va-mi na-ve-ky, a-le-lu-ja.